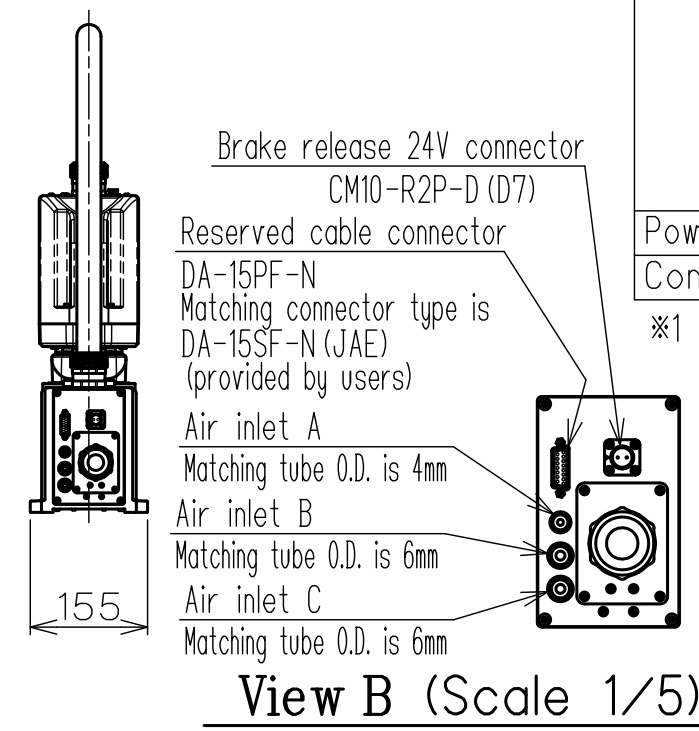
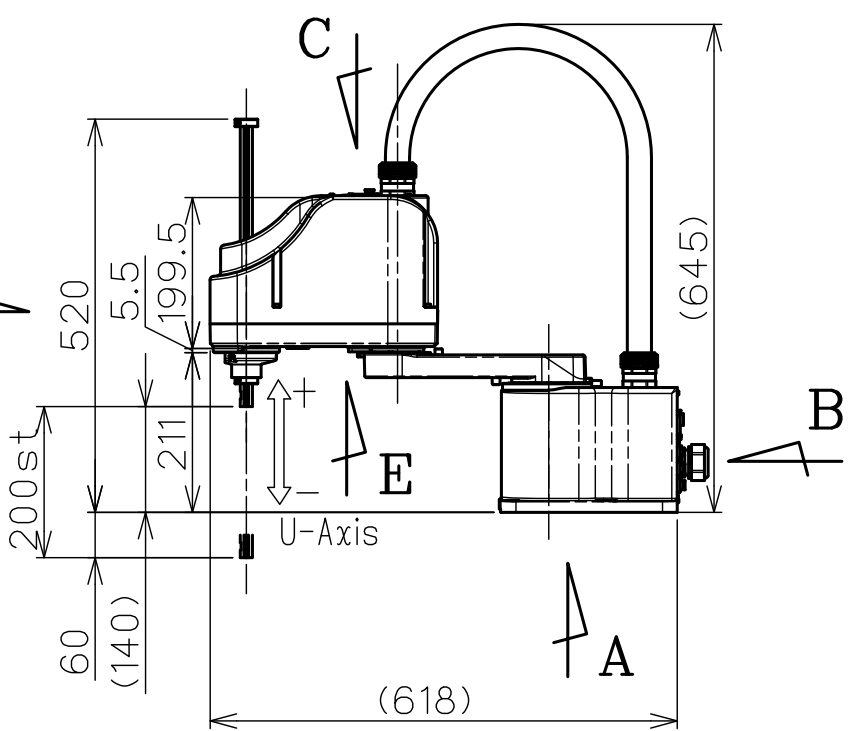
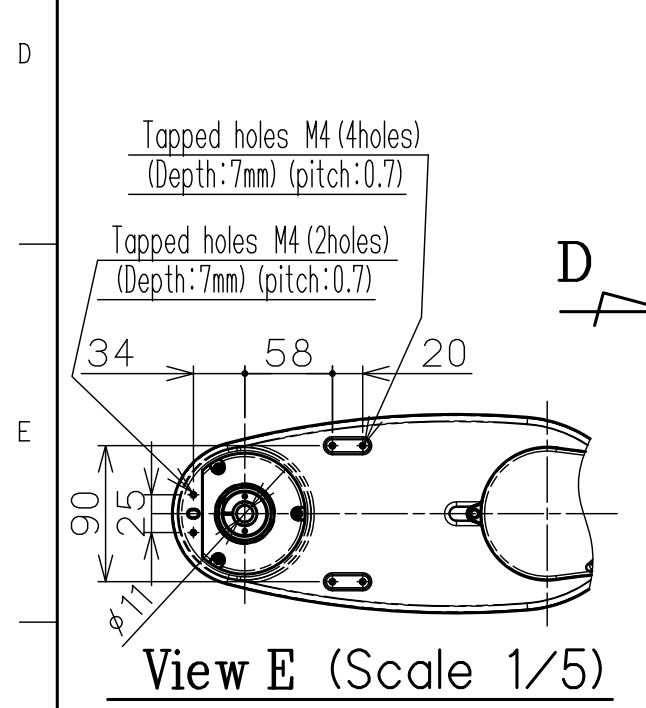
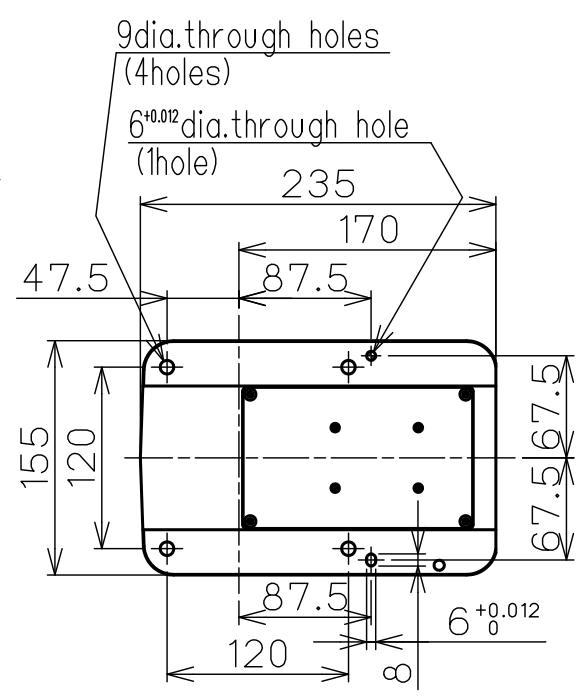
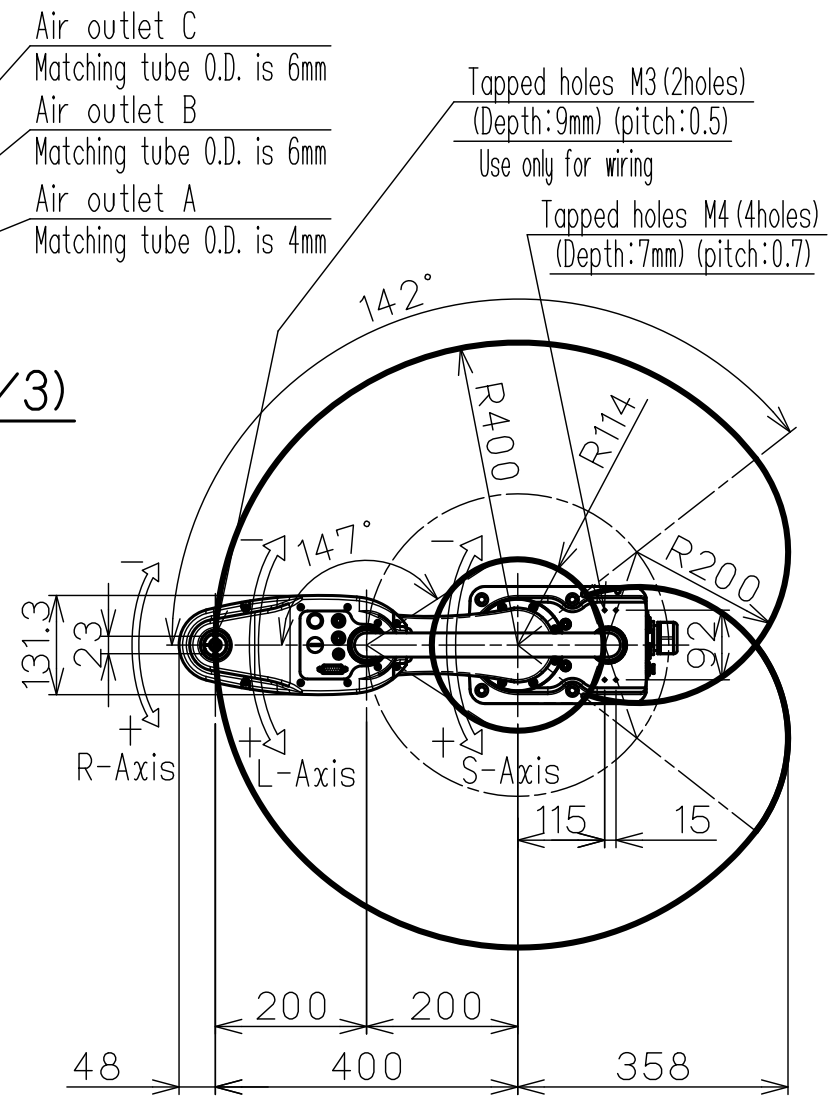
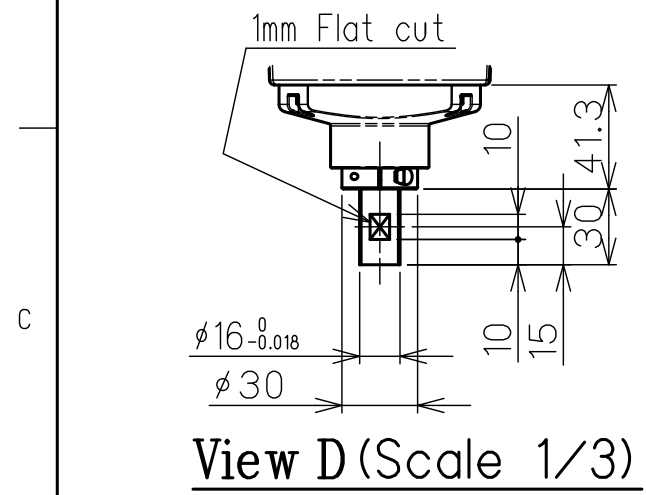
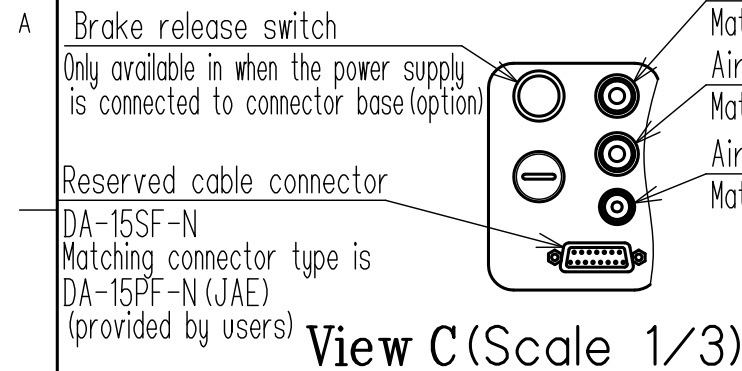


DWG.NO. HW1386204



Item	Model	MOTOMAN-SG400
Configuration	Horizontally Articulated	
Degree of Freedom	4	
Payload	3kg	
Repeatability	S-Axis+L-Axis	0.01mm
	U-Axis	0.01mm
	R-Axis	0.004°
Range of Motion	S-Axis(first arm)	-142° - +142°
	L-Axis(second arm)	-147° - +147°
	U-Axis(Upper/lower)	200mm
	R-Axis(rotation)	-360° - +360°
Maximum Speed	S-Axis	12.9rad/s, 740° /s
	L-Axis	13.9rad/s, 800° /s
	U-Axis	1200mm/s
	R-Axis	52.3rad/s, 3000° /s
Allowable Inertia (GD <sup>2</sup> /4)	R-Axis	0.06kg·m <sup>2</sup>
Approx. Mass	14kg	
Protected structure	IP20	
Mounting method	Floor-mounted	
Ambient Conditions	Temperature	0 to 40°C
	Humidity	20 to 80%RH (Non-Condensing)
	Vibration	4.9m/s <sup>2</sup> (0.5G) or less
	Altitude	1000m or less
	Others	<ul style="list-style-type: none"> <li>•Free from explosive and corrosive gas or liquid.</li> <li>•Free from dust,soot,oil,or water.</li> <li>•Free from excessive electrical noise.(plasma)</li> <li>•Free from strong magnetic fields.</li> </ul>
Power Requirements	1.0kVA	
Controller	YRC1000micro	

※1 The manipulator is in the home position.

