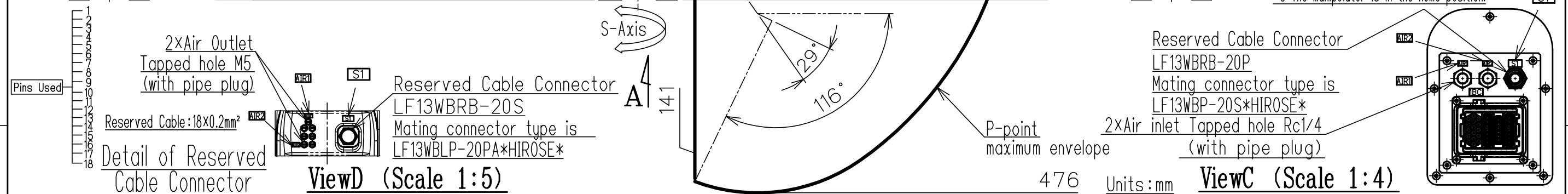




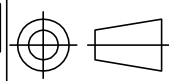
Model		MOTOMAN-GP7/AR900
Item		
Configuration		Vertically Articulated
Degree of Freedom		6
Payload		7kg
Repeatability *1		±0.03mm
Range of motion	S-Axis (Turning)	-170° - +170°
	L-Axis (Lower Arm)	-65° ~ +145°
	U-Axis (Upper Arm)	-116° ~ +255°
	R-Axis (Roll)	-190° - +190°
	B-Axis (Pitch/Yaw)	-135° - +135°
	T-Axis (Twist)	-360° - +360°
Maximum speed	S-Axis	6.54rad/s,375° /s
	L-Axis	5.50rad/s,315° /s
	U-Axis	7.15rad/s,410° /s
	R-Axis	9.59rad/s,550° /s
	B-Axis	9.59rad/s,550° s
Allowable Moment	T-Axis	17.45rad/s,1000° /s
	R-Axis	17Nm (1.73kgfm)
	B-Axis	17Nm (1.73kgfm)
Allowable Inertia (GD ² /4)	T-Axis	10Nm (1.02kgfm)
	R-Axis	0.5kg・m ²
	B-Axis	0.5kg・m ²
	T-Axis	0.2 kg・m ²
Approx.Robot mass		34kg
Protected structure		IP67
Mounting method *2		Floor-mounted,Wall-mounted, Slope-mounted,Ceiling-mounted
Ambient Conditions	Temperature	0 to 45 ℃
	Humidity	20 to 80%RH (Non-Condensing)
	Vibration	Less than 4.9m/s ² (0.5G)
	Altitude	1000 m or less
	Others	・Free from explosive or corrosive gas and liquid. ・Free from electrical noise. ・Free from strong magnetic fields.
Power Requirements		1KVA
Controller		YRC1000

Notes: *1 Repeatability is conformed to ISO 9283.
 *2 When the manipulator is installed on a tile or a wall,
 the motion of S-axis will be limited.
 *3 The manipulator is in the home position.



Note: 1.All rights reserved. 2.Please note that the data is subject to be deleted without advance notice. 3.No warranty is given in relation to the data including the specification. 4.We are not responsible for any damages or loss caused by the use of the data.	<div style="border: 1px solid black; padding: 5px; text-align: center;"> FOR STUDY PURPOSE ONLY </div> <div style="text-align: center;">  YASKAWA 株式会社 安川電機 </div>	<div style="text-align: center;">  Reference Drawing </div>	TITLE MOTOMAN-GP7/AR900	DRWN DATE ' 16.08.17
			DIMENSION DIAGRAM	DWG.NO. HW1384164 <div style="float: right; border: 1px solid black; padding: 2px 5px;">2</div>

FOR STUDY PURPOSE ONLY



SCALE 1 : 10

YASKAWA
株式会社 安川電機

Reference Drawing

TITLE	MOTOMAN-GP7/AR900
DIMENSION DIAGRAM	

DRWN DATE	' 16.08.17
-----------	------------

DWG.NO.	
---------	--

HW1384164

S I Z E	A 3
---------	-----