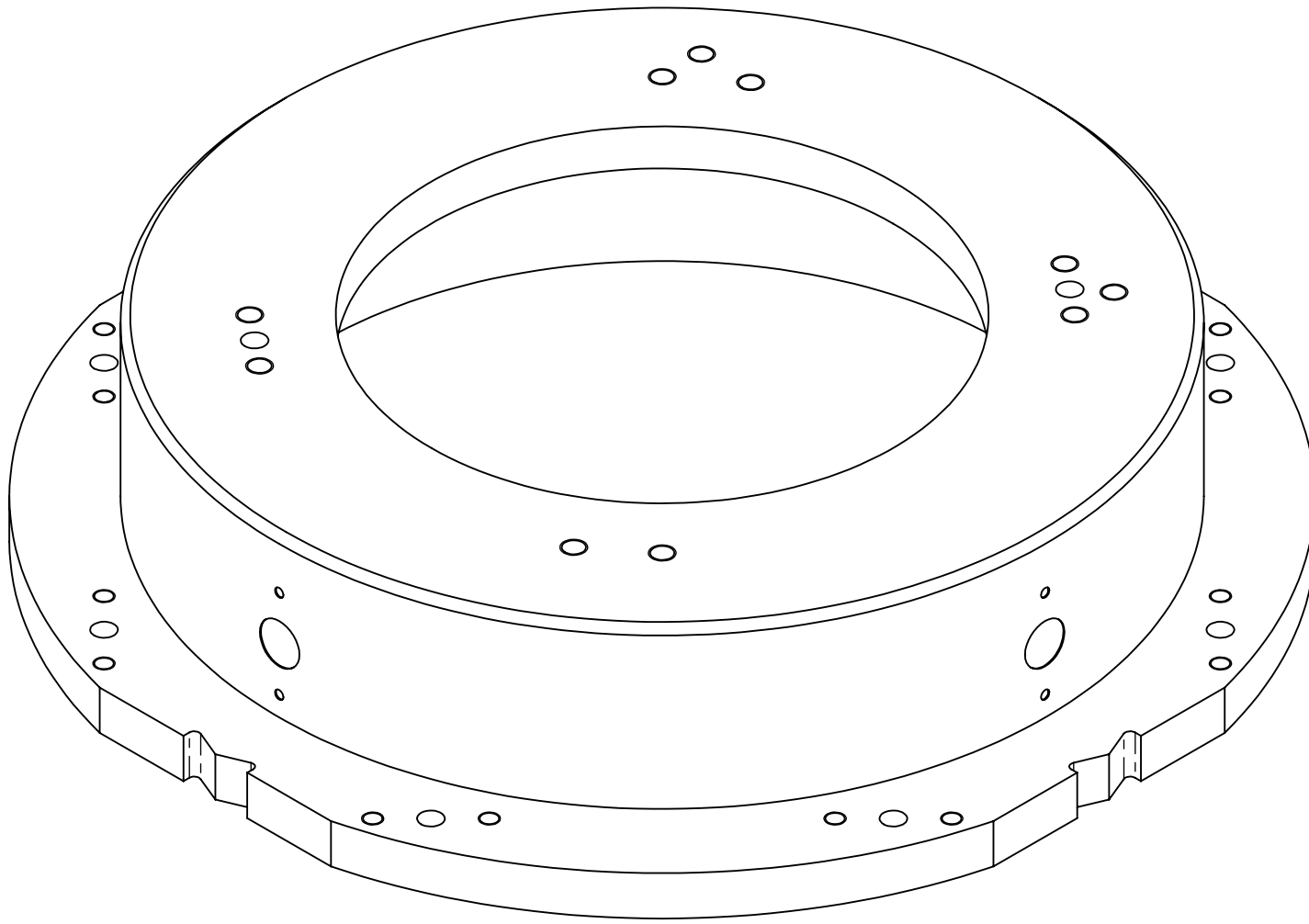
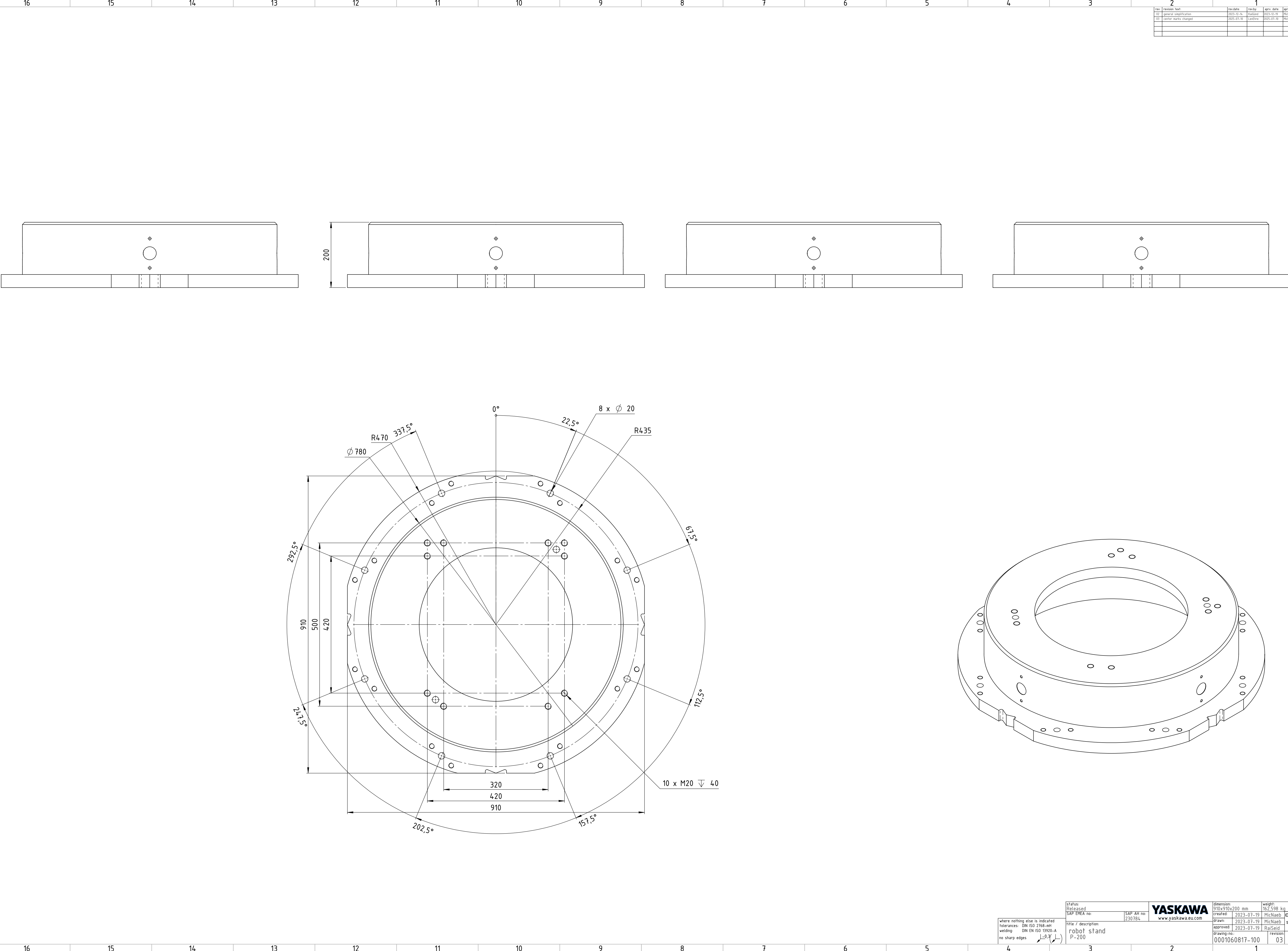
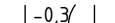



The reproduction, distribution and utilization of this document as well as the communication of its content to third parties without the written permission of Yaskawa Europe GmbH is prohibited. All rights reserved in the event of a patent, utility model or design.



where nothing else is indicated tolerances: DIN ISO 2768-mH welding: DIN EN ISO 1920-A no sharp edges 	status: Released SAP EMEA no:		SAP AH no: 230784	YASKAWA www.yaskawa.eu.com		dimension: 910x910x200 mm created: 2023-07-19 drawn: 2023-07-19 approved: 2023-07-19 drawing-no: 0001060817-100	weight: 162,598 kg MicNaeb RaiSeid revision: 03	 A1 15 4/5
	Title / description: robot stand P-200							