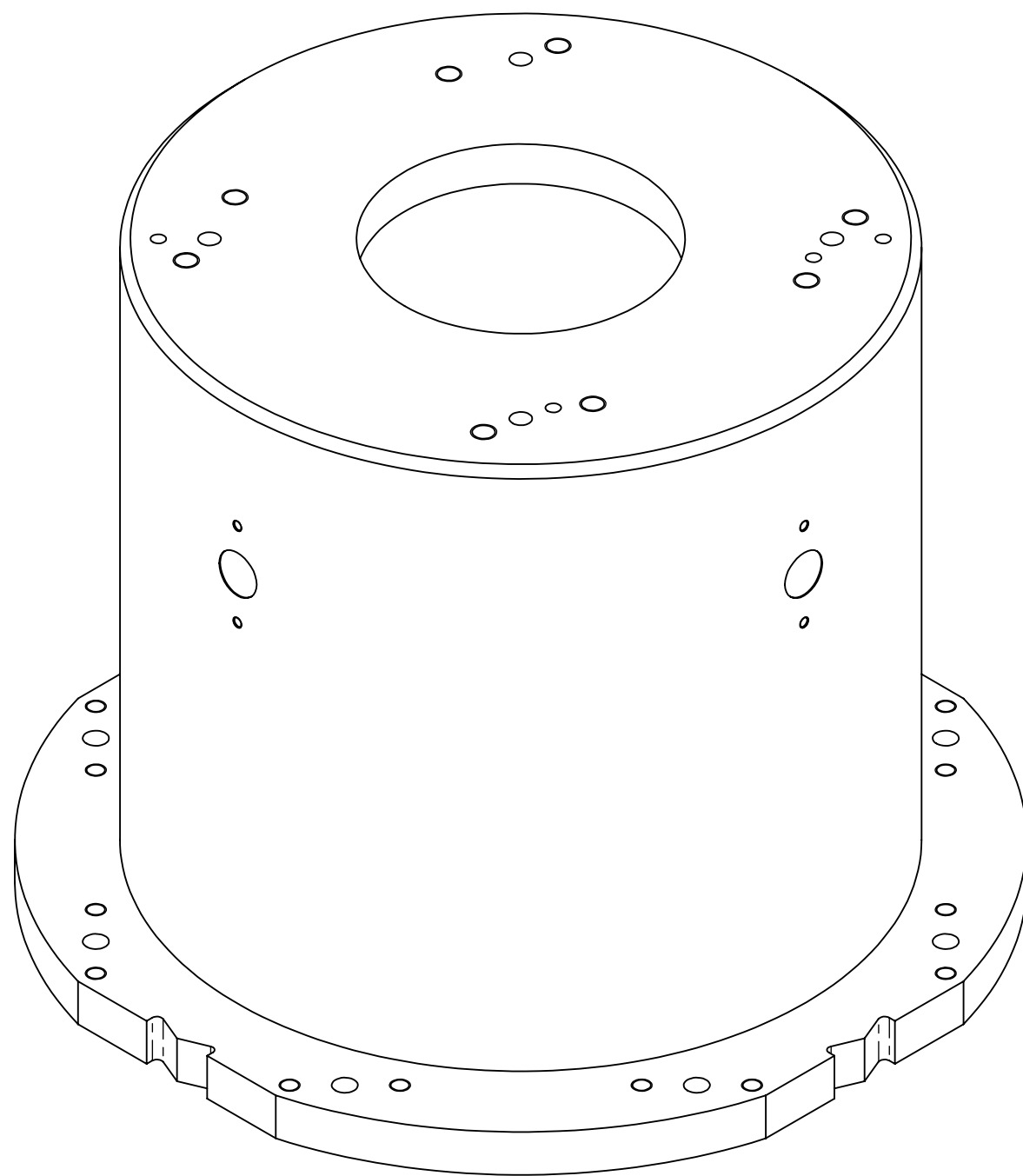
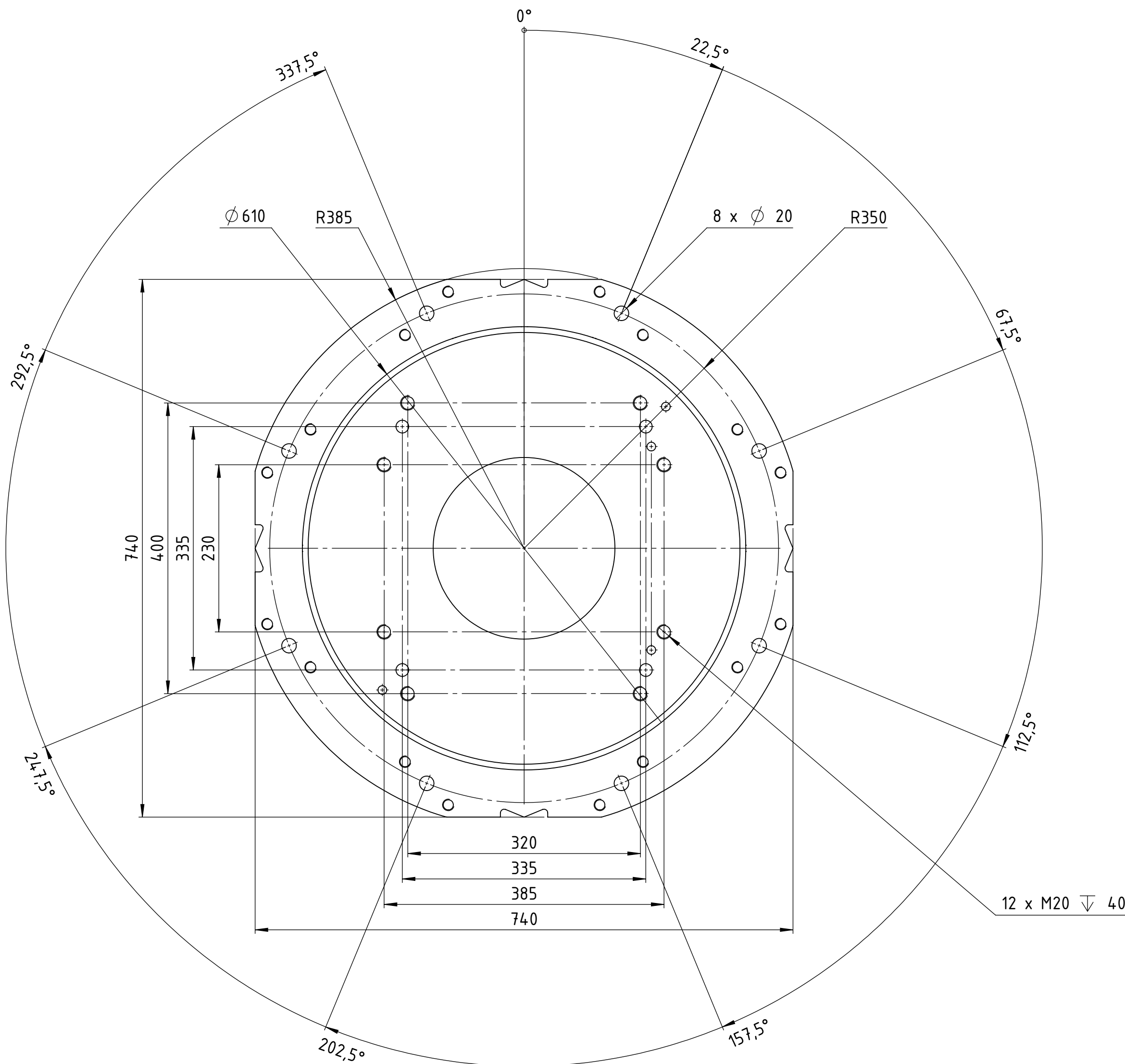
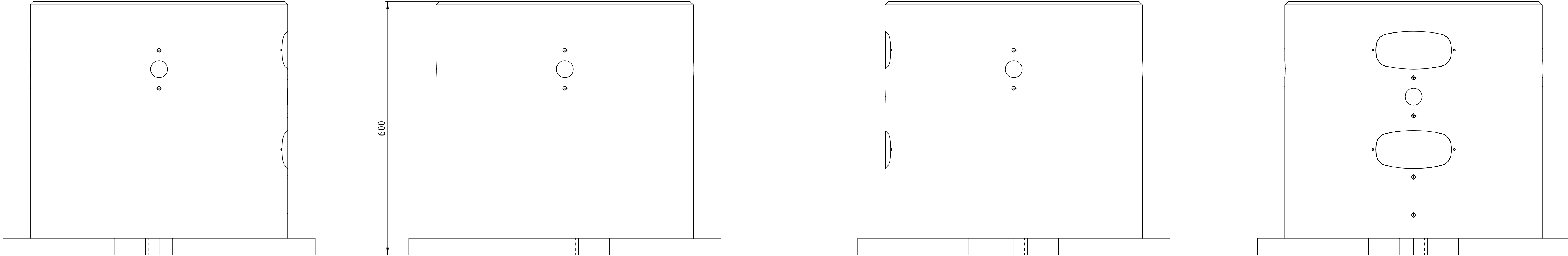


The reproduction, distribution and utilization of this document as well as the communication of its content to third parties without the written permission of Yaskawa Europe B.V. is prohibited. All rights reserved in the event of a patent, utility model or design.

| rev. | revision text | rev.date | rev.by | appr. date | appr. by |
|------|-----------------------------------|------------|----------|------------|----------|
| 02 | modified tolerances | 2023-01-10 | MichNaeb | 2023-01-10 | AndLoes |
| 03 | general simplification | 2023-02-01 | AndLoes | 2023-02-01 | MichNaeb |
| 04 | increases wall thickness | 2024-01-17 | MichNaeb | 2024-01-17 | revScrt |
| 05 | center mark and drillings changed | 2025-01-15 | AndLoes | 2025-01-15 | MichNaeb |



| | | | | | |
|---------------------|--|------------------------------|--|-----------------------|--|
| status: Released | | dimension: 740x740x600 mm | | weight: 165.096 kg | |
| SAP EMEA no: | | SAP AH no: | | www.yaskawa.eu.com | |
| created: | | 2022-02-04 | | MicNaeb | |
| drawn: | | 2022-02-04 | | AndLoes | |
| approved: | | 2022-02-07 | | AndLoes | |
| drawing-no: | | 0000130136-100 | | revision: | |
| drawing-no: | | 0000130136-100 | | 05 | |
| drawing-no: | | 0000130136-100 | | 15 | |
| drawing-no: | | 0000130136-100 | | 4/5 | |

| | | | |
|---|--|--------------|--|
| title / description: robot stand M-600 | | sheet: A1 | |
| where nothing else is indicated tolerances: DIN ISO 2768-mH welding: DIN EN ISO 15920-A no sharp edges | | YASKAWA | |